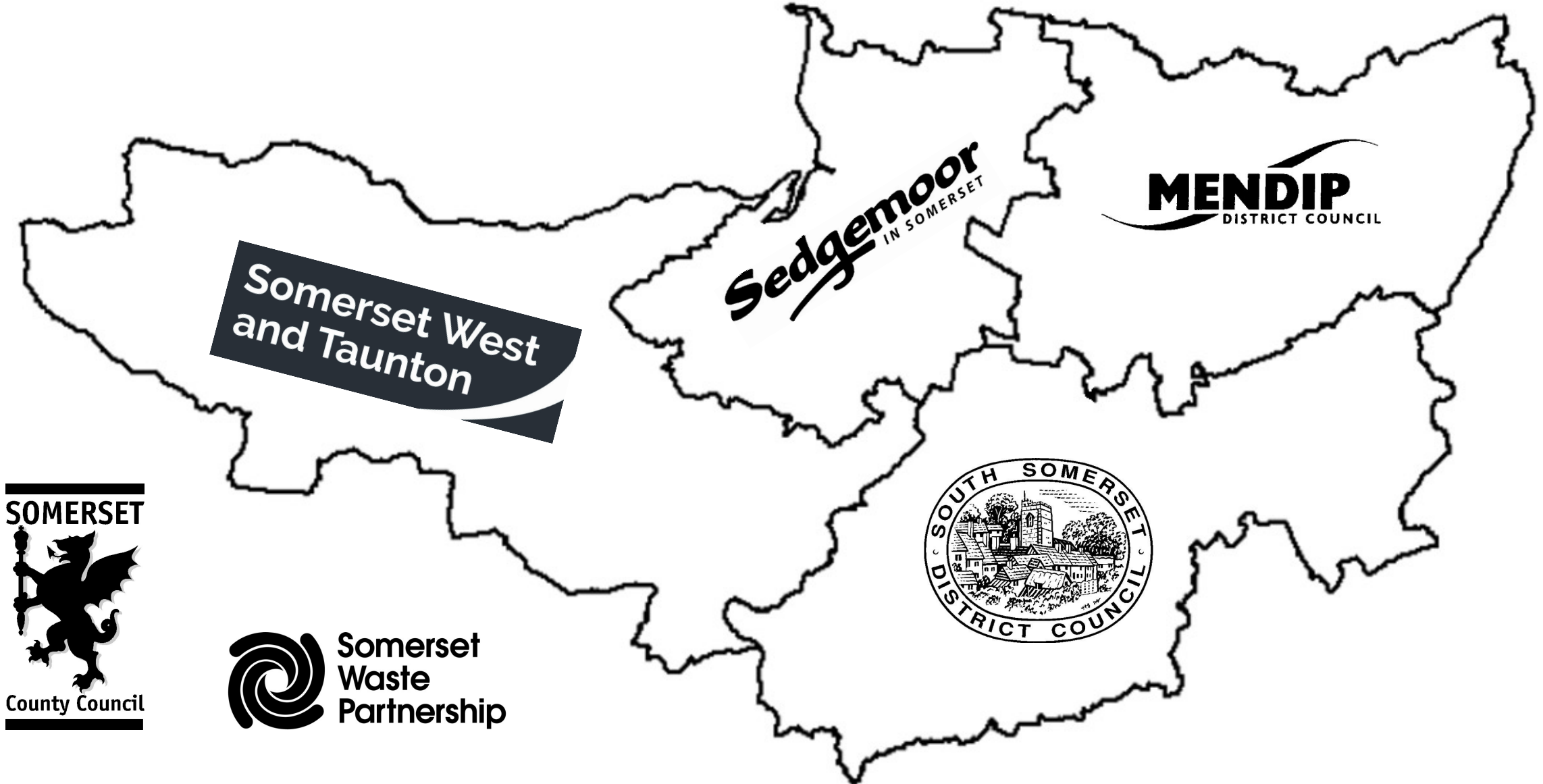




Somerset
Council

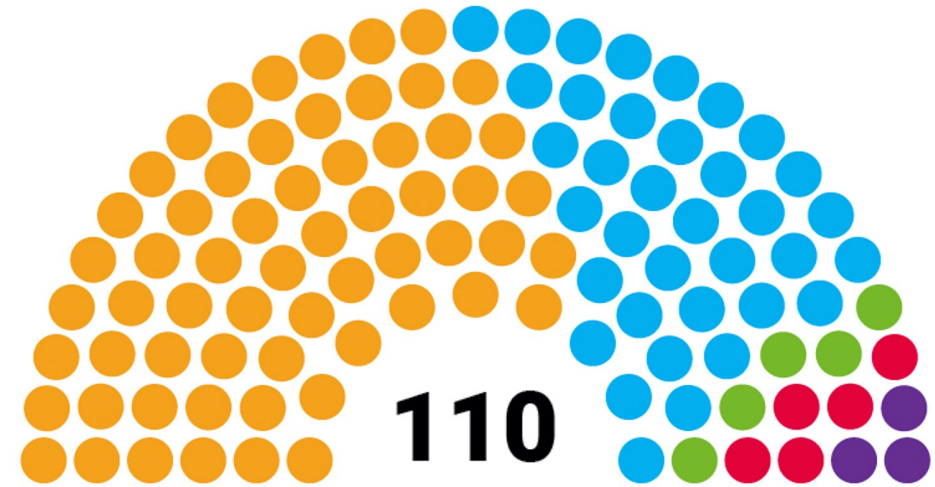
2 Tiers - County & Districts



Towards a Unitary Council

**one
somerset**

Business case for a new single
unitary council for Somerset

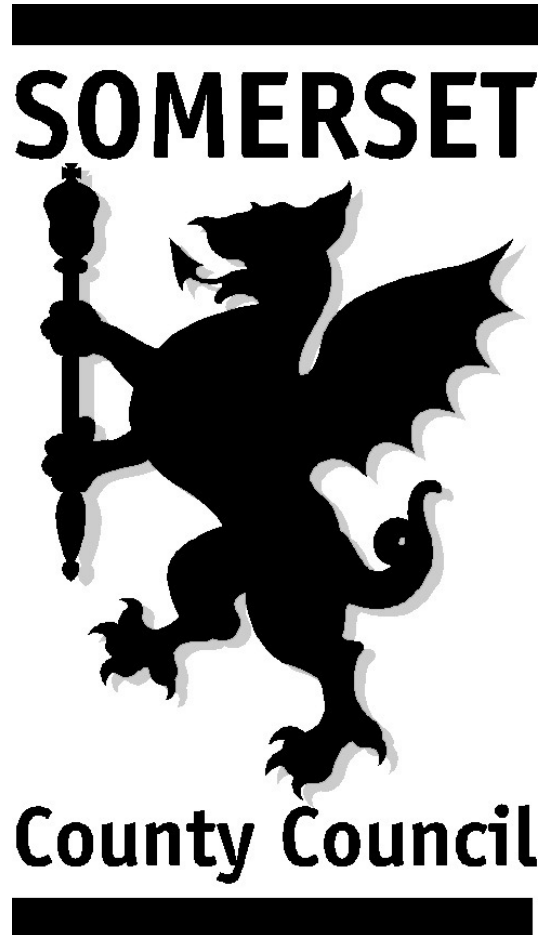


- 61 Liberal Democrats
- 36 Conservative Party
- 5 Green Party
- 5 Labour Party
- 3 Independent

Upper Tone Division



Towards a Unitary Council 2022



New Somerset Council 2023



4 areas: North, East, South & West



Council organisation

- **Councillors**
- **Officers**
- **Committees**
- **Strategies & plans**

Council Structure

Councillors
(110)



Officers
(~5,000)

Councillors Structure

Full Council
Leader & Executive
Regulatory Committees (4x areas)
Scrutiny Committees (x5)
Task & Finish Groups

Officers Structure

Chief Executive & Directorates:

- **Community Services**
- **Strategy, Workforce & Localities**
- **Adult & Health Services**
- **Public Health**
- **Climate & Place**
- **Resources & Corporate Services**
- **Children & Family Services**

Scrutiny Committees

- **Communities**
- **Climate & place**
- **Corporate & resources**
- **Children & families**
- **Adults & health**

Scrutiny - Communities

SERVICE AREAS:

- **Housing** inc: Council housing & homelessness
- **Customer services**
- **Cultural services** inc: libraries, leisure centres, heritage, arts centres
- **Regulatory & operational services** inc: environmental health, building control, town centre CCTV, street cleansing, open spaces, bereavement services

Scrutiny – Climate & Place

SERVICE AREAS:

- **Climate & sustainability**
inc: carbon neutrality, climate resilience, nature recovery, waste, flooding
- **Transport & infrastructure**
inc: highways, rights of way, parking, active travel, buses
- **Economy & employment**
inc: business support, town centres, skills, trading standards
- **Planning** inc: local plan, affordable housing, development, minerals

Scrutiny – Corporate & Resources

SERVICE AREAS:

- **Finance & budget monitoring**
- **Asset management**
- **Information technology**
- **Partnerships & localities**
- **Strategy & performance**
- **Legal & governance**
- **Workforce & change**

Scrutiny – Children & Families

SERVICE AREAS:

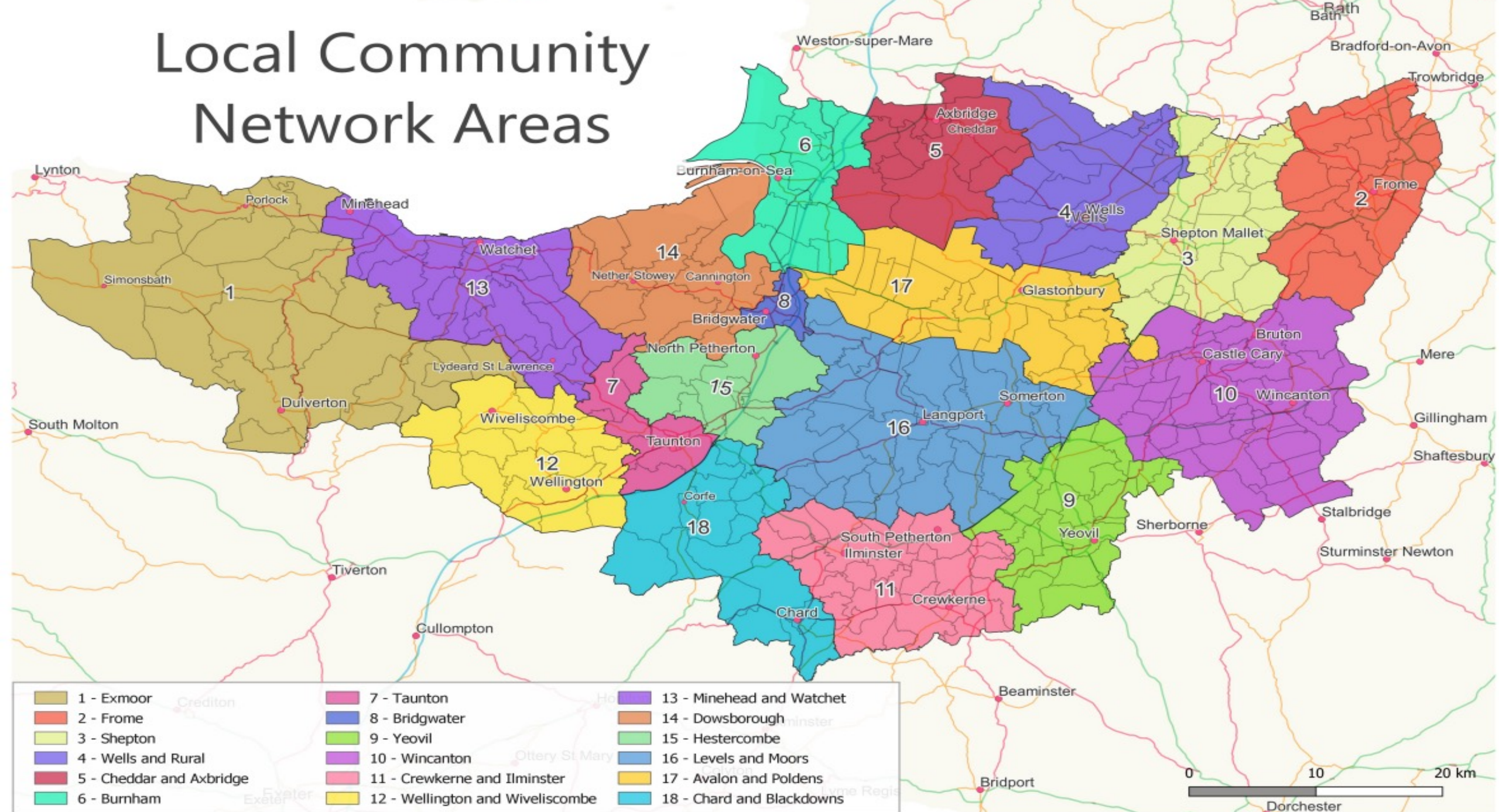
- **Education & schools**
- **Child health & prospects**
- **Protect most vulnerable**
- **Adoption & fostering**
- **Special needs**
- **Youth offending**
- **Children's centres**

Scrutiny – Adults & Health

SERVICE AREAS:

- **Public health & wellbeing**
- **Adult care & support**
- **Community safety**
- **Learning & physical disabilities**
- **Somerset armed forces community covenant**

Local Community Network Areas



Wellington and Wiveliscombe

Local community Network Areas



The Purpose of LCNs

To be the focus for the new Council for community engagement and development, within an ethos of local partnership working, looking to improve outcomes for residents through establishing strong connections between Somerset Council, our communities and our partners.

Core Membership of LCN

- Somerset Councillors (6 for Wellington & Wiveliscombe)
- A member from each Town or Parish Council (16)
- Representatives from:
 - Local Neighbourhood policing team
 - Somerset National Health Service
 - Devon and Somerset Fire and Rescue Service
 - Education
 - Voluntary, Community, Faith and Social Enterprise Organisations
 - Businesses or Trade Groups
 - Others considered important

Additional attendees could include

- Local community and voluntary sector organisations
- Local businesses or trade groups
- Housing associations or housing officers
- Other relevant local groups

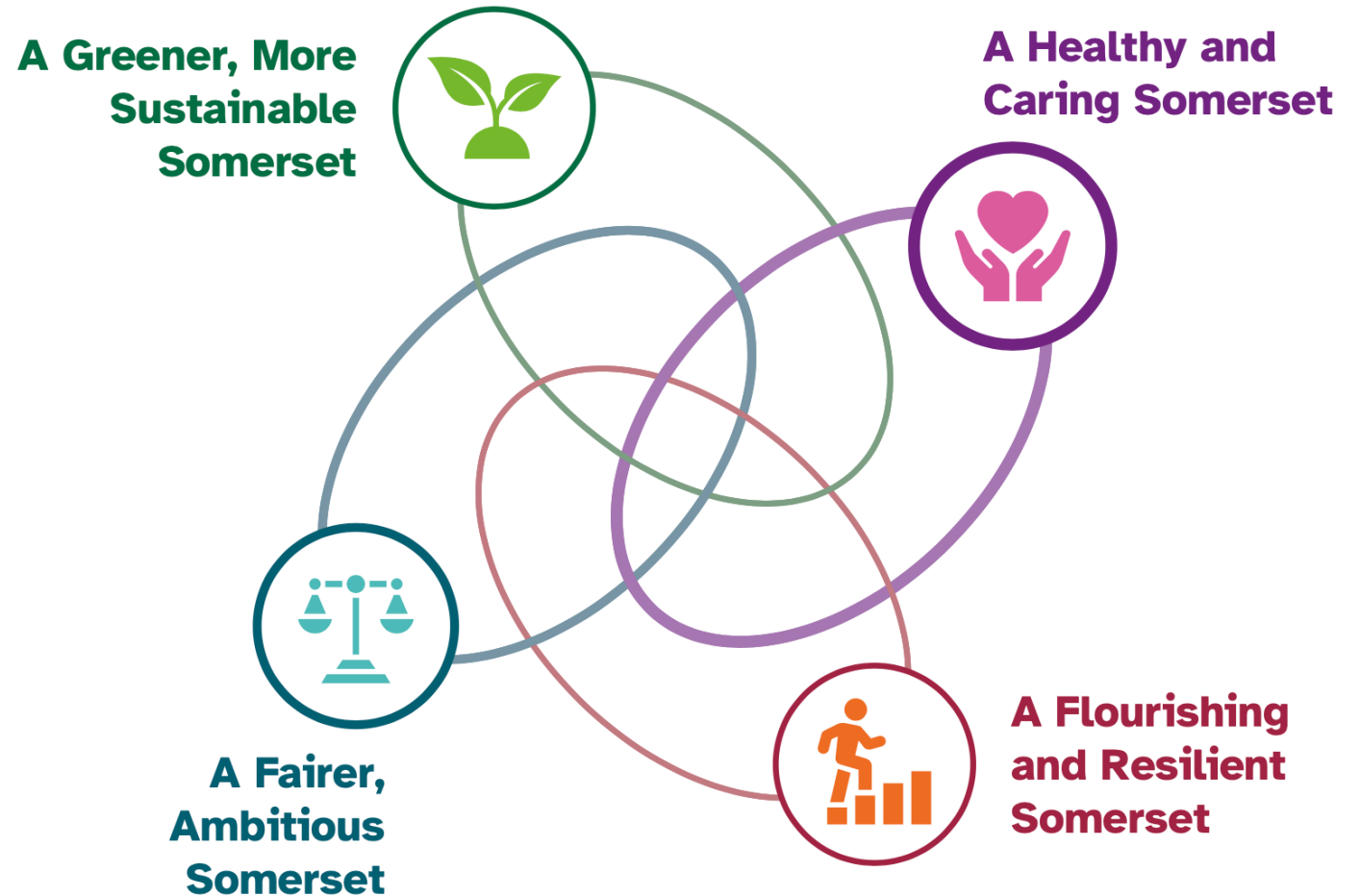
What LCNs will do

- Forum for community voice, engagement and influence
- Enhance participation in democracy and local decision making
- Enhance collaboration by bringing together local representatives
- Identify evidence-based community priorities
- Create plans
- Identify and secure resources

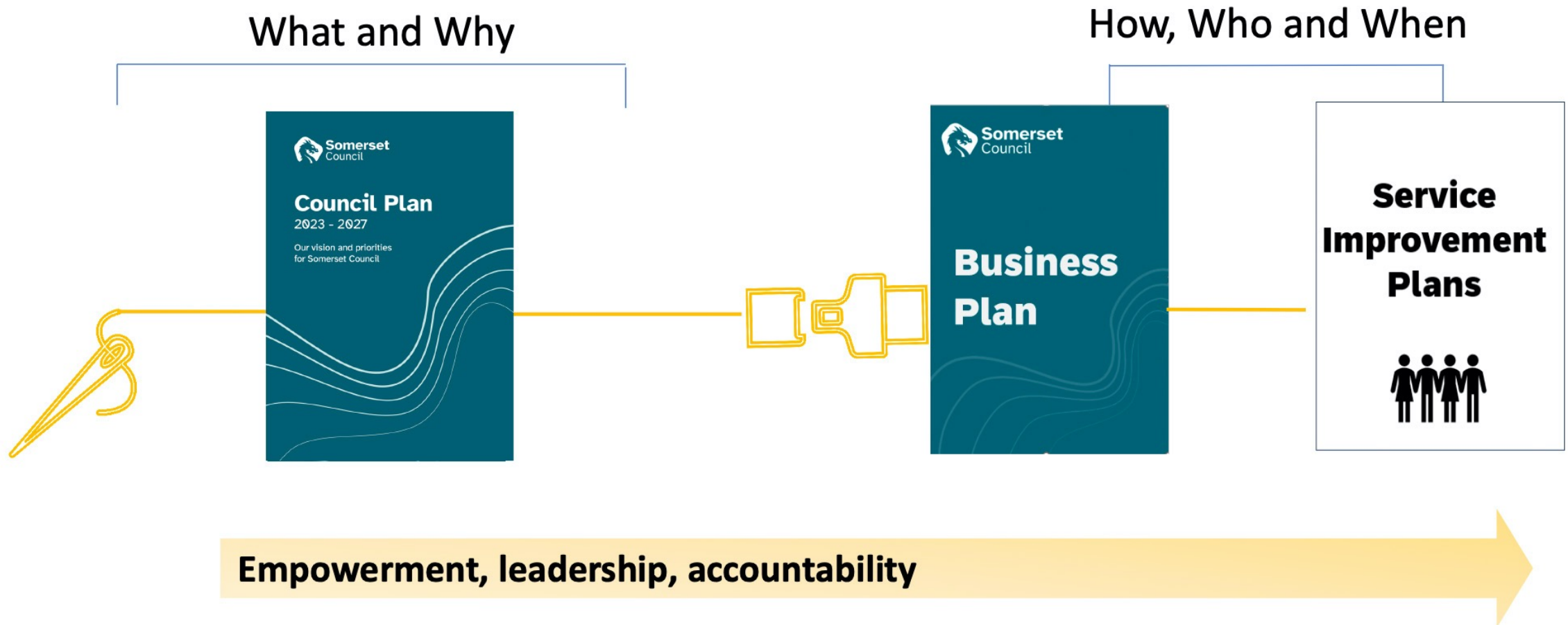
Town & parish councils

- Represent their areas
- Local services such as allotments, bus shelters, burial grounds, neighbourhood plan, public toilets, recreation, activities that benefit all or some of area
- Raise a local precept on Council Tax

Strategies & plans



Business plan



Plans & strategies

Housing Strategy



Education for Life Strategy



Climate Emergency Strategy



Digital Strategy and Customer Strategy



Integrated Health & Care Strategy



Medium Term Financial Strategy



Tree Strategy



Adult Social Care Strategy



Somerset Future Transport Plans



Local Plan(s)



Improving Lives Strategy



LGR Transition Programme



Our Transformation Programme



Children & Young People's Plan

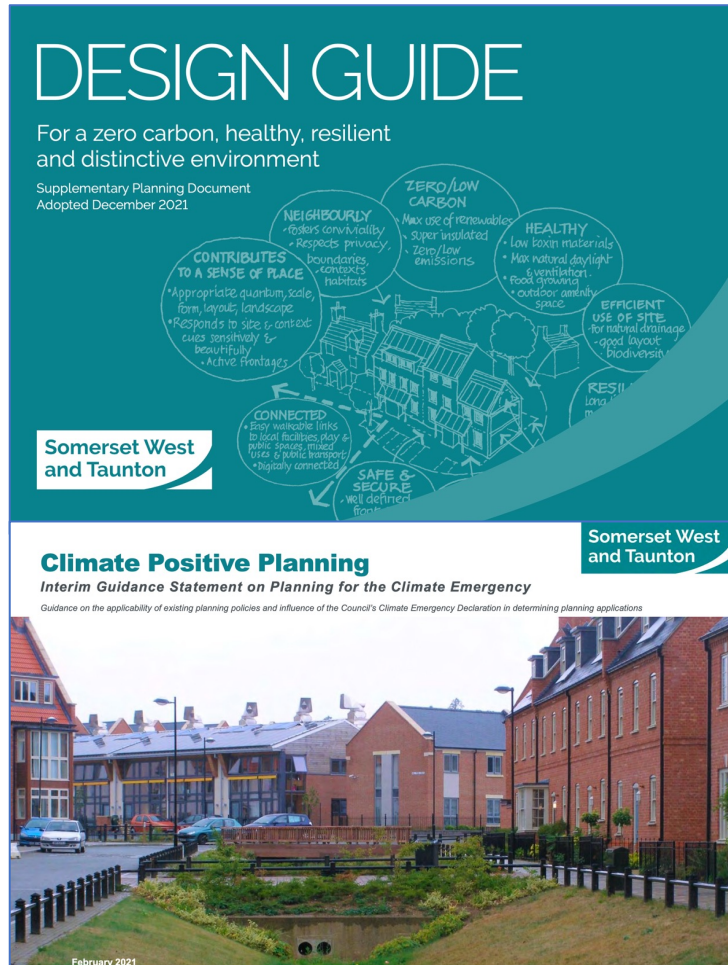


Economic Strategy (ies)



And others

Local plan – planning policies



Budget 2023/24

NET REVENUE BUDGET *	£493.4m
Adults services & public health	38%
Children services	25%
Community services	7%
Climate & place	18%
Strategy and corporate	12%

CAPITAL PROGRAMME *	£196.1m
Adult social care	1%
Children's social care	13%
Community services	11%
Climate and place	68%
Resources and corporate services	6%

* In addition, council housing has a separate account, with revenue costs of £42.5m and capital costs of £47.3m, which are financed by income from rent, charges, income, reserves, grants and borrowing.

Budget monitoring & planning

- Over-spending in 2022/23 & 2023/24
- Section 114 notice (bankruptcy) in two years if nothing is done
- £100m budget gap over next three years

Service access

- One website: **www.somerset.gov.uk**
- One phone: **0300 123 2224**
- Offices: **Deane House & County Hall, Taunton +**
- Digital access point:
Wivey Community Library



Reporting online

- Recycling & refuse collections
- Litter & fly-tipping
- Problems on the road
- Comment on planning applications



Wiveliscombe action & issues



Town centre vision

Wiveliscombe TOWN CENTRE

– a vision for people, place and movement

Somerset West
and Taunton



European Union
European Regional
Development Fund



HM Government

Funded through: Emergency Town Centre Recovery and Welcome Back funds



Local project funding



Yellow lines & parking



25 Bus – use it or lose it!

HELP SAVE WIVEY BUSES

Cuts are planned to the 25 bus route
unless it is used more

PLEASE USE IT – DON'T LOSE IT

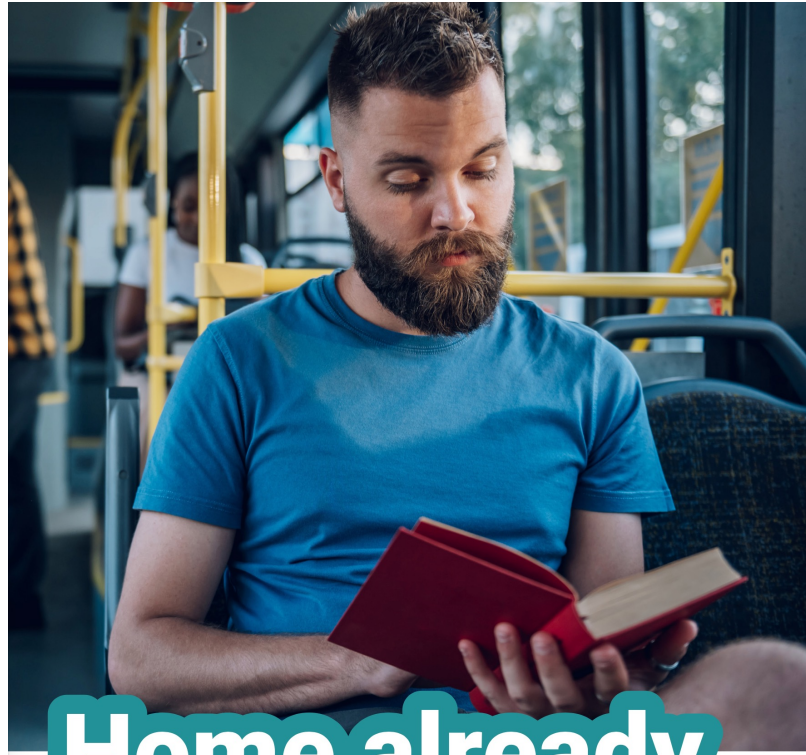
Dulverton – Bampton – Waterrow –
Wiveliscombe – Milverton –
Hillcommon/Oake – Taunton

Timetable links and information at:
www.wiveliscombe.com/members/wivey-buses



£2 fare

Bus it! for less
extended to
31 Dec 2024



Home already

Bus it! between Taunton and Dulverton on the 25
Taunton > Norton Fitzwarren > Milverton > Wiveliscombe > Dulverton



To view an up to date route timetable, scan the QR code or visit:
www.somerset.gov.uk/busit25



Part of Somerset's Bus Service Improvement Plan



Funded by
UK Government



Somerset
Council



Less than a latte

Bus it! between Taunton and Dulverton on the 25
Taunton > Norton Fitzwarren > Milverton > Wiveliscombe > Dulverton



To view an up to date route timetable, scan the QR code or visit:
www.somerset.gov.uk/busit25



Part of Somerset's Bus Service Improvement Plan



Funded by
UK Government



Somerset
Council

Contact us

Cllr Dave Mansell

- dave.mansell@somerset.gov.uk
- 01984 623 823

Cllr Gwil Wren

- gwil.wren@somerset.gov.uk
- 01823 400 657